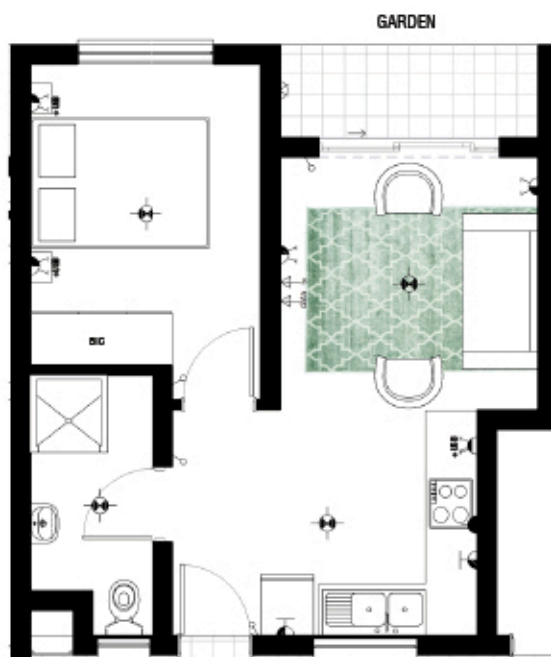


APARTMENT FLOOR PLAN



D I N S

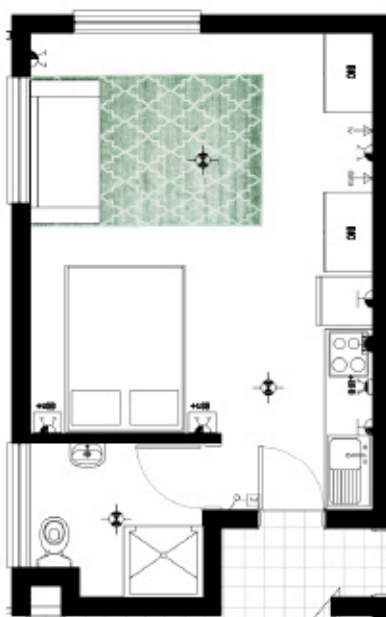
TYPE A2 PHASE 4 ONWARDS

1 Bedroom 1 Bathroom

Apartment Area	37m ²
Covered Balcony	3m ²
TOTAL AREA	40m²

Balwin
PROPERTIES

APARTMENT FLOOR PLAN



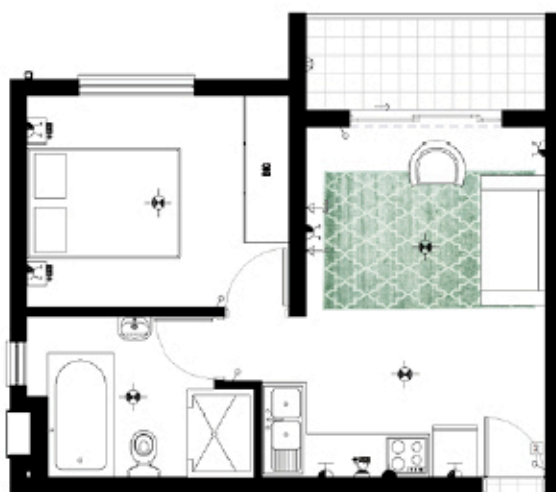
TYPE A2 PHASE 4 ONWARDS

Studio

Apartment Area	32m ²
TOTAL AREA	32m²

Balwin
PROPERTIES

APARTMENT FLOOR PLAN



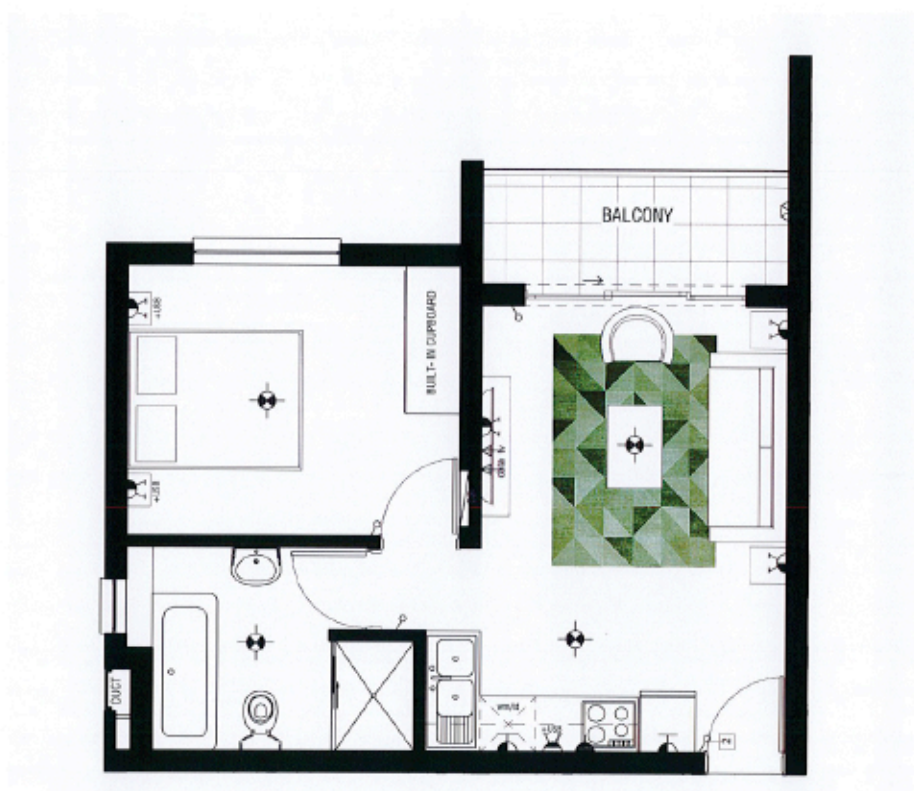
TYPE A2 PHASE 4 ONWARDS

1 Bedroom 1 Bathroom

Apartment Area	39m ²
Covered Balcony	5m ²
TOTAL AREA	44m²

Balwin
PROPERTIES

APARTMENT FLOOR PLAN



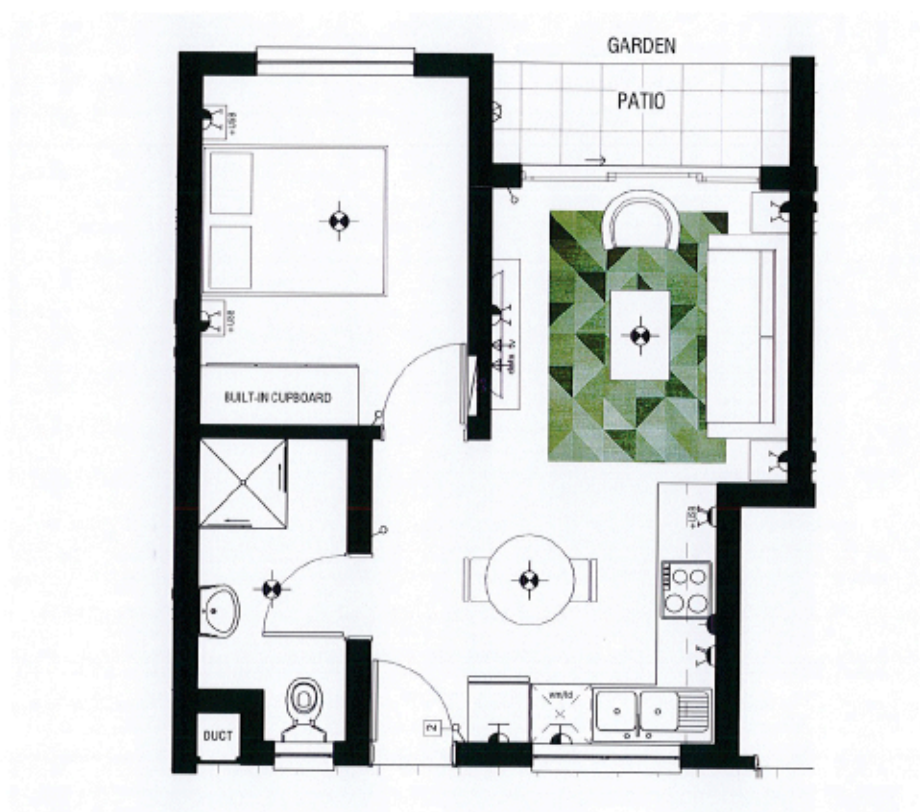
TYPE B PHASE 4 ONWARDS

1 Bedroom 1 Bathroom

Apartment Area	39.46m ²
Covered Balcony	4.41m ²
TOTAL AREA	43.86m²

Balwin
PROPERTIES

APARTMENT FLOOR PLAN



D I N S

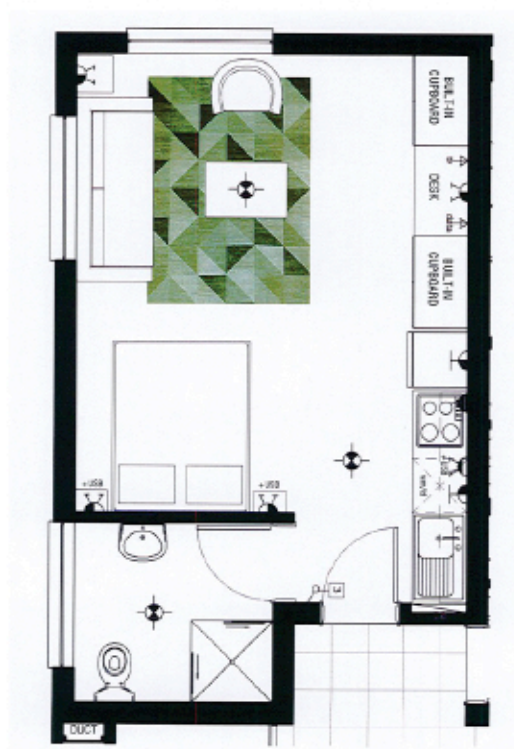
TYPE B PHASE 4 ONWARDS

1 Bedroom 1 Bathroom

Apartment Area	37.32m ²
Covered Balcony	3.17m ²
TOTAL AREA	40.49m²

Balwin
PROPERTIES

APARTMENT FLOOR PLAN



TYPE B PHASE 4 ONWARDS

Studio

Apartment Area	32.66m ²
TOTAL AREA	32.66m²

Balwin
PROPERTIES